

SaCoVLM™

Seeing is believing

Disposable video laryngeal mask

Specifications

Type	Size	Patient weight (kg)	Max ETT (mm)	Max drain tube (Fr)	Max instrument that can pass through ventilation channel (outer diameter: mm)
MLM30C	3.0	30-50	7.0	16	5.8
MLM40C	4.0	50-70	7.5	16	5.8
MLM50C	5.0	70-100	8.0	16	5.8
MLM30	3.0	30-50	7.0	16	5.8
MLM40	4.0	50-70	7.5	16	5.8
MLM50	5.0	70-100	8.0	16	5.8

Note: the model with c comes with a cleaning line.



SaCoVLM™

Seeing is believing

Disposable video laryngeal mask



ALLYTEC

Tel: 08-31 00 46
kontakt@allytec.se
www.allytec.se

ZHEJIANG UE MEDICAL CORP.

✉ INFO@UEWORLD.COM

🌐 WWW.UEWORLD.COM/EN.PHP

☎ +86 571 28057363

📍 8 YOUYI RD, BAITA ECONOMIC DEVELOPMENT ZONE, XIANJU, ZHEJIANG 317300, CHINA

SaCoVLM™

Seeing is believing

Disposable video laryngeal mask

Clinical uses

1. Rapid ventilation for normal and difficult airways
2. Optimal for emergency airways
3. Video-assisted tracheal intubation and extubation
4. The preferred choice for rescue ventilation in various clinical scenarios

Cleaning line

Inflation line

Visual tube channel

Ventilation (intubation) channel

Gastric tube channel

Pre-molded

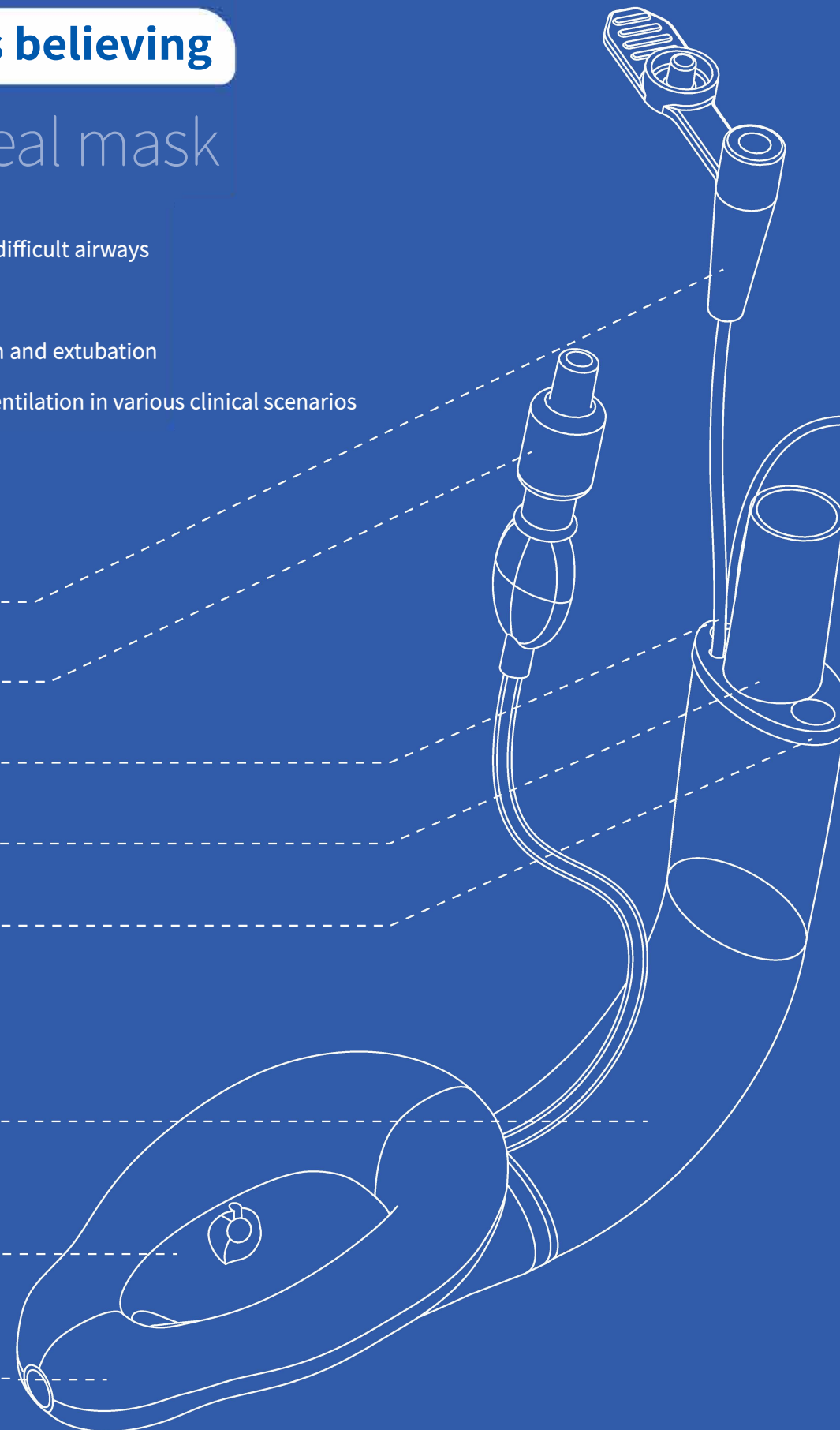
Ergonomic and easier for insertion & placement

Unique slope at (the) distal end

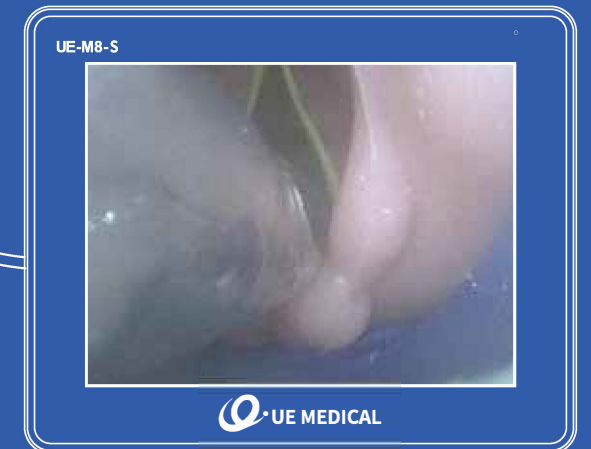
Facilitate accurate insertion of ETT

Inflatable cuff

Larger contact area reduces pressure on the tissue, increases the seal of the cuff, and minimizes reflux and aspiration.



Real-time image



• Seeing is believing

Visible insertion process allows accurate placement and therefore avoids air leakage.

• Intraoperative monitoring

Real-time monitoring to detect reflux or cuff movement in time.

• Facilitates safe intubation

Guide the tracheal intubation under visible condition, with safety and comfort.